



SUBSTANCE ABUSE & MENTAL HEALTH DATA ARCHIVE

National Survey on Drug Use and Health, 2010

United States Department of Health and Human Services. Substance Abuse and Mental Health Services Administration. Center for Behavioral Health Statistics and Quality

Computer-Assisted Interview Showcards and Pillcards

SAMHDA

is sponsored by



U.S. DEPARTMENT OF HEALTH AND HUMAN SERVICES

Substance Abuse and Mental Health Services Administration

www.samhsa.gov

Terms of Use

These data are distributed under the following terms of use. By continuing past this page, you signify your agreement to comply with the requirements as stated below:

Privacy of Research Subjects

Any intentional identification of a research subject (whether an individual or an organization) or unauthorized disclosure of his or her confidential information violates the promise of confidentiality given to the providers of the information. Disclosure of confidential information may also be punishable under federal law. Therefore, users of data agree:

- To use these datasets solely for research or statistical purposes and not for re-identification of specific research subjects.
- To make no use of the identity of any research subject discovered inadvertently and to report any such discovery to CBHSQ and SAMHDA (samhda-support@samhsa.hhs.gov)

Citing Data

You agree to reference the recommended bibliographic citation in any of your publications that use SAMHDA data. Authors of publications that use SAMHDA data are required to send citations of their published works for inclusion in a database of related publications.

Disclaimer

You acknowledge that SAMHSA will bear no responsibility for your use of the data or for your interpretations or inferences based upon such uses.

Violations

If CBHSQ determines that this terms of use agreement has been violated, then possible sanctions could include:

- Report of the violation to the Research Integrity Officer, Institutional Review Board, or Human Subjects Review Committee of the user's institution. A range of sanctions are available to institutions including revocation of tenure and termination.
- If the confidentiality of human subjects has been violated, then report of the violation may be made to the Federal Office for Human Research Protections. This may result in an investigation of the user's institution, which can result in institution-wide sanctions including the suspension of all research grants.
- Report of the violation of federal law to the United States Attorney General for possible prosecution.
- Court awarded payments of damages to any individual(s)/organization(s) harmed by the breach of confidential data.

Definitions

CBHSQ

Center for Behavioral Health Statistics and Quality

Promise of confidentiality

A promise to a respondent or research participant that the information the respondent provides will not be disseminated in identifiable form without the permission of the respondent; that the fact that the respondent participated in the study will not be disclosed; and that disseminated information will include no linkages to the identity of the respondent. Such a promise encompasses traditional notions of both confidentiality and anonymity. In most cases, federal law protects the confidentiality of the respondent's identity as referenced in the Promise of Confidentiality. Under this condition, names and other identifying information regarding respondents would be confidential.

Research subject

A person or organization that participates in a research study. A research subject may also be called a respondent. A respondent is generally a survey respondent or informant, experimental or observational subject, focus group participant, or any other person providing information to a study.

SAMHDA

Substance Abuse and Mental Health Data Archive

SAMHSA

Substance Abuse and Mental Health Services Administration

Information about Copyrighted Content

Some instruments administered as part of this study may contain in whole or substantially in part contents from copyrighted instruments. Reproductions of the instruments are provided as documentation for the analysis of the data associated with this collection. Restrictions on "fair use" apply to all copyrighted content. More information about the reproduction of copyrighted works by educators and librarians is available from the United States Copyright Office.

NOTICE WARNING CONCERNING COPYRIGHT RESTRICTIONS

The copyright law of the United States (Title 17, United States Code) governs the making of photocopies or other reproductions of copyrighted material. Under certain conditions specified in the law, libraries and archives are authorized to furnish a photocopy or other reproduction. One of these specified conditions is that the photocopy or reproduction is not to be "used for any purpose other than private study, scholarship, or research." If a user makes a request for, or later uses, a photocopy or reproduction for purposes in excess of "fair use," that user may be liable for copyright infringement.

Summary

The National Survey on Drug Use and Health (NSDUH) series (formerly titled National Household Survey on Drug Abuse) primarily measures the prevalence and correlates of drug use in the United States. The surveys are designed to provide quarterly, as well as annual, estimates. Information is provided on the use of illicit drugs, alcohol, and tobacco among members of United States households aged 12 and older. Questions included age at first use as well as lifetime, annual, and past-month usage for the following drug classes: marijuana, cocaine (and crack), hallucinogens, heroin, inhalants, alcohol, tobacco, and nonmedical use of prescription drugs, including pain relievers, tranquilizers, stimulants, and sedatives. The survey covered substance abuse treatment history and perceived need for treatment, and included questions from the Diagnostic and Statistical Manual (DSM) of Mental Disorders that allow diagnostic criteria to be applied. The survey included questions concerning treatment for both substance abuse and mental health-related disorders. Respondents were also asked about personal and family income sources and amounts, health care access and coverage, illegal activities and arrest record, problems resulting from the use of drugs, and needle-sharing. Questions introduced in previous administrations were retained in the 2010 survey, including questions asked only of respondents aged 12 to 17. These "youth experiences" items covered a variety of topics, such as neighborhood environment, illegal activities, drug use by friends, social support, extracurricular activities, exposure to substance abuse prevention and education programs, and perceived adult attitudes toward drug use and activities such as school work. Several measures focused on prevention-related themes in this section. Also retained were questions on mental health and access to care, perceived risk of using drugs, perceived availability of drugs, driving and personal behavior, and cigar smoking. Questions on the tobacco brand used most often were introduced with the 1999 survey. For the 2008 survey, Adult mental health questions were added to measure symptoms of psychological distress in the worst period of distress that a person experienced in the past 30 days and suicidal ideation. In 2008, a split-sample design also was included to administer separate sets of questions (WHODAS vs. SDS) to assess impairment due to mental health problems. Beginning with the 2009 NSDUH, however, all of the adults in the sample received only the WHODAS questions. Background information includes gender, race, age, ethnicity, marital status, educational level, job status, veteran status, and current household composition.

Universe

The civilian, non-institutionalized population of the United States aged 12 and older, including residents of non-institutional group quarters such as college dormitories, group homes, shelters, rooming houses, and civilians dwelling on military installations.

Data Type

survey data

Data Source

computer-assisted personal interviews, and audio computer-assisted self interviews

Additional Information for Study 32722

<http://datafiles.samhsa.gov>

Study Citation

We appreciate the [appropriate citation](#) for study documentation obtained from SAMHDA. The study description for this study includes a [suggested bibliographic citation](#) for the data.

2010 National Survey on Drug Use and Health

SURVEY MATERIALS

DISCLAIMER

SAMHSA provides links to other Internet sites as a service to its users and is not responsible for the availability or content of these external sites. SAMHSA, its employees, and contractors do not endorse, warrant, or guarantee the products, services, or information described or offered at these other Internet sites. Any reference to a commercial product, process, or service is not an endorsement or recommendation by SAMHSA, its employees, or contractors. For documents available from this server, the U.S. Government does not warrant or assume any legal liability or responsibility for the accuracy, completeness, or usefulness of any information, apparatus, product, or process disclosed.

RESEARCH TRIANGLE INSTITUTE



DEPARTMENT OF HEALTH & HUMAN SERVICES

U.S. Public Health Service

Office of Applied Studies

Rockville, MD 20857

_____, 2010

Dear Resident:

To better serve all people across the nation, the United States Public Health Service (USPHS) is conducting a national study on health-related issues. Your address was randomly chosen along with more than 200,000 others. Research Triangle Institute (RTI) is under contract to carry out this study for the USPHS. Soon, an RTI interviewer will be in your neighborhood to give you more information.

When the interviewer arrives, please ask to see his or her personal identification card. An example of the ID card is shown below. The interviewer will ask you a few questions, and then may ask one or two members of your household to complete an interview. It is possible that no one from your household will be chosen to be interviewed. You may choose not to take part in this study, but no one else can take your place. **Every person who is chosen and completes the interview will receive \$30 in cash.**

All the information collected is confidential and will be used only for statistical purposes. This is assured by federal law. This letter is addressed to "Resident" because your address was selected, and we do not know your name. Feel free to ask the interviewer any questions you have about the study.

Your help is very important to this study's success. Thank you for your cooperation.

Sincerely,

National Study Director,
Office of Applied Studies

"Image of Identification Badge"

National Field Director, RTI

Assigned Field Interviewer



Study Description

Public Health Service Office of Applied Studies

Your address is one of several in this area randomly chosen for the 2010 National Survey on Drug Use and Health. This study, sponsored by the United States Public Health Service, collects information for research and program planning by asking about:

- tobacco, alcohol, and drug use or non-use,
- knowledge and attitudes about drugs,
- mental health, and
- other health issues.

You cannot be identified through any information you give us. Your name and address will never be connected to your answers. Also, federal law requires us to keep all of your answers confidential. Any data that you provide will only be used by authorized personnel for statistical purposes according to the Confidential Information Protection and Statistical Efficiency Act of 2002.

The screening questions take just a few minutes. If anyone is chosen, the interview will take about an hour. You can refuse to answer any questions, and you can quit at any time. **Each person who is chosen and completes the interview will receive \$30 in cash.**

If you have questions about the study, call the Project Representative at .
If you have questions about your rights as a study participant, call RTI's Office of Research Protection at (a toll-free number). You can also visit our project Website: <http://nsduhweb.rti.org/> for more information.

Thank you for your cooperation and time.

Project Officer
Office of Applied Studies
Substance Abuse and Mental Health Services Administration (SAMHSA)
U.S. Public Health Service
Department of Health and Human Services

Your confidentiality is protected by the Confidential Information Protection and Statistical Efficiency Act of 2002 (CIPSEA, PL 107-347). Any project staff or authorized data user who violates CIPSEA may be subject to a jail term of up to 5 years, a fine of up to \$250,000, or both.

INTRODUCTION AND INFORMED CONSENT FOR INTERVIEW RESPONDENTS AGE 18+

IF INTERVIEW RESPONDENT IS NOT SCREENING RESPONDENT,
INTRODUCE YOURSELF AND STUDY AS NECESSARY: Hello, I'm _____,
and I'm working on a nationwide study sponsored by the U.S. Public Health
Service. You should have received a letter about this study. (SHOW LEAD
LETTER, IF NECESSARY.)

READ THE BOXED INFORMATION BELOW BEFORE STARTING EVERY INTERVIEW

This year, we are interviewing about 70,000 people across the nation. You have been randomly chosen to take part. You will represent over 4,500 other people who are similar to you. You may choose not to take part in this study, but no one else can take your place. We will pay you \$30 when you finish the interview.

GIVE STUDY DESCRIPTION TO R IF YOU HAVE NOT ALREADY DONE SO.

This study asks about tobacco, alcohol, and drug use or non-use, knowledge and attitudes about drugs, mental health, and other health issues. It takes about an hour. You will answer most of the questions on the computer, so I will not see your answers. We are only interested in the combined responses from all 70,000 people, not just one person's answers. This is why we do not ask for your name and we keep your answers separate from your address. RTI may contact you by phone or mail to ask a few questions about the quality of my work. This is why we ask for your phone number and mailing address at the end of the interview.

While the interview has some personal questions, federal law keeps your answers private. We hope that protecting your privacy will help you to give accurate answers. You can quit the interview at any time and you can refuse to answer any questions.

If it is all right with you, let's get started.

(Can we find a private place to complete the interview?)

INTRODUCTION AND INFORMED CONSENT FOR INTERVIEW RESPONDENTS AGE 12-17

FIRST, OBTAIN PERMISSION FROM THE PARENT AND READ THE BOXED INFORMATION BELOW

Your (AGE) year-old child has been selected to be in this study. Your child's participation is voluntary. This interview asks about tobacco, alcohol, and drug use or non-use, knowledge and attitudes about drugs, mental health, and other health related issues. All of your child's answers will be confidential and used only for statistical purposes. Since your child will answer most of the questions on the computer, I will never see the answers, and you are not allowed to see them either. If it is all right with you, we'll get started.

(Can we find a private place to complete the interview?)

THEN, READ THE BOXED INFORMATION BELOW BEFORE STARTING EVERY INTERVIEW WITH A 12-17 YEAR OLD

This year, we are interviewing about 70,000 people across the nation. You have been randomly chosen to take part. You will represent over 1,000 young people in this country who are similar to you. You may choose not to take part in this study, but no one else can take your place. We will pay you \$30 when you finish the interview.

GIVE STUDY DESCRIPTION TO R IF YOU HAVE NOT ALREADY DONE SO.

This study asks about tobacco, alcohol, and drug use or non-use, knowledge and attitudes about drugs, mental health, and other health issues. It takes about one hour. You will answer most of the questions on the computer, so I will not see your answers. Your answers will never be seen by either your parents or your school. We are only interested in the combined responses from all 70,000 people, not just one person's answers. This is why we do not ask for your name and we keep your answers separate from your address. RTI may contact you by phone or mail to ask a few questions about the quality of my work. This is why we ask for your phone number and mailing address at the end of the interview.

While the interview has some personal questions, federal law keeps your answers private. We hope that protecting your privacy will help you to give accurate answers. You can quit the interview at any time and you can refuse to answer any questions.

If it is all right with you, let's get started.

SHOWCARD 1

- 1 MEXICAN, MEXICAN AMERICAN, MEXICANO
OR CHICANO
- 2 PUERTO RICAN
- 3 CENTRAL OR SOUTH AMERICAN
- 4 CUBAN OR CUBAN AMERICAN
- 5 DOMINICAN (FROM DOMINICAN REPUBLIC)
- 6 SPANISH (FROM SPAIN)

SHOWCARD 2

- 1 WHITE
- 2 BLACK OR AFRICAN AMERICAN
- 3 AMERICAN INDIAN OR ALASKA NATIVE
(AMERICAN INDIAN INCLUDES NORTH
AMERICAN, CENTRAL AMERICAN, AND SOUTH
AMERICAN INDIANS)
- 4 NATIVE HAWAIIAN
- 5 OTHER PACIFIC ISLANDER
- 6 ASIAN (INCLUDING: ASIAN INDIAN, CHINESE,
FILIPINO, JAPANESE, KOREAN, AND
VIETNAMESE)

SHOWCARD 3

- 1 ASIAN INDIAN
- 2 CHINESE
- 3 FILIPINO
- 4 JAPANESE
- 5 KOREAN
- 6 VIETNAMESE

SHOWCARD 4

0 NEVER ATTENDED SCHOOL

PRIMARY AND SECONDARY GRADES:

- 1 1ST GRADE COMPLETED
- 2 2ND GRADE COMPLETED
- 3 3RD GRADE COMPLETED
- 4 4TH GRADE COMPLETED
- 5 5TH GRADE COMPLETED
- 6 6TH GRADE COMPLETED
- 7 7TH GRADE COMPLETED
- 8 8TH GRADE COMPLETED
- 9 9TH GRADE COMPLETED
- 10 10TH GRADE COMPLETED
- 11 11TH GRADE COMPLETED
- 12 12TH GRADE COMPLETED

COLLEGE OR UNIVERSITY:

- 13 1ST YEAR COMPLETED
- 14 2ND YEAR COMPLETED
- 15 3RD YEAR COMPLETED
- 16 4TH YEAR COMPLETED
- 17 5TH OR HIGHER YEAR COMPLETED

SHOWCARD 5

PRIMARY AND SECONDARY GRADES:

- 1 1ST GRADE
- 2 2ND GRADE
- 3 3RD GRADE
- 4 4TH GRADE
- 5 5TH GRADE
- 6 6TH GRADE
- 7 7TH GRADE
- 8 8TH GRADE
- 9 9TH GRADE
- 10 10TH GRADE
- 11 11TH GRADE
- 12 12TH GRADE

COLLEGE OR UNIVERSITY:

- 13 1ST YEAR
- 14 2ND YEAR
- 15 3RD YEAR
- 16 4TH YEAR
- 17 5TH YEAR OR HIGHER

SHOWCARD 6

- 1 SCHOOL WAS BORING OR I DIDN'T WANT TO BE THERE
- 2 I GOT PREGNANT / I GOT SOMEONE PREGNANT
- 3 I GOT IN TROUBLE OR EXPELLED FOR SELLING DRUGS
- 4 I GOT IN TROUBLE OR EXPELLED FOR USING DRUGS
- 5 I GOT IN TROUBLE OR EXPELLED FOR SOME OTHER REASON
- 6 I OFTEN GOT INTO TROUBLE
- 7 I HAD TO GET A JOB (OR WORK MORE HOURS)
- 8 I WAS GETTING BAD GRADES
- 9 I WASN'T LEARNING ANYTHING
- 10 I GOT MARRIED OR MOVED IN WITH MY BOY/GIRLFRIEND
- 11 I MOVED HERE FROM ANOTHER COUNTRY AND DIDN'T ENROLL IN SCHOOL (OR DROPPED OUT OF SCHOOL) BECAUSE OF LANGUAGE OR OTHER PROBLEMS
- 12 I WAS TREATED BADLY AT SCHOOL
- 13 I BECAME ILL OR INJURED
- 14 I WENT TO JAIL / PRISON
- 15 I HAD RESPONSIBILITIES AT HOME OR PERSONAL PROBLEMS

SHOWCARD 7

- 1 MANUFACTURING
- 2 WHOLESALE TRADE
- 3 RETAIL TRADE
- 4 AGRICULTURE
- 5 CONSTRUCTION
- 6 SERVICE
- 7 GOVERNMENT

SHOWCARD 8

- 1 PRIVATE FOR-PROFIT COMPANY OR BUSINESS
- 2 PRIVATE NOT-FOR-PROFIT COMPANY OR BUSINESS
- 3 LOCAL GOVERNMENT (CITY, COUNTY, ETC.)
- 4 STATE GOVERNMENT
- 5 FEDERAL GOVERNMENT
- 6 INTERNATIONAL OR FOREIGN GOVERNMENT
- 7 SELF-EMPLOYED IN AN INCORPORATED BUSINESS
- 8 SELF-EMPLOYED IN AN UNINCORPORATED BUSINESS
- 9 WORKING WITHOUT PAY IN A FAMILY BUSINESS OR FARM

SHOWCARD 9

- 1 ON VACATION, SICK, FURLOUGH, STRIKE, OR OTHER TEMPORARY ABSENCE
- 2 ON LAYOFF AND NOT LOOKING FOR WORK
- 3 ON LAYOFF AND LOOKING FOR WORK
- 4 WAITING TO REPORT TO A NEW JOB
- 5 SELF-EMPLOYED AND DID NOT HAVE ANY BUSINESS LAST WEEK
- 6 GOING TO SCHOOL OR TRAINING

SHOWCARD 10

- 1 LOOKING FOR WORK
- 2 ON LAYOFF AND NOT LOOKING FOR WORK
- 3 KEEPING HOUSE OR CARING FOR CHILDREN
FULL-TIME
- 4 GOING TO SCHOOL OR TRAINING
- 5 RETIRED
- 6 DISABLED FOR WORK
- 7 DIDN'T WANT A JOB

SHOWCARD 11

- 1 LESS THAN 10 PEOPLE
- 2 10-24 PEOPLE
- 3 25-99 PEOPLE
- 4 100-499 PEOPLE
- 5 500 PEOPLE OR MORE

SHOWCARD 12

- 1 HANDLED ON AN INDIVIDUAL BASIS / POLICY DOES NOT SPECIFY WHAT HAPPENS
- 2 EMPLOYEE IS FIRED
- 3 EMPLOYEE IS REFERRED FOR TREATMENT OR COUNSELING
- 4 NOTHING HAPPENS
- 5 SOMETHING ELSE HAPPENS

SHOWCARD 13

- 1 SELF
- 2 FATHER (INCLUDES STEP, FOSTER, ADOPTIVE)
- 3 SON (INCLUDES STEP, FOSTER, ADOPTIVE)
- 4 BROTHER (INCLUDES HALF, STEP, FOSTER, ADOPTIVE)
- 5 HUSBAND
- 6 UNMARRIED PARTNER
- 7 HOUSEMATE OR ROOMMATE
- 8 SON-IN-LAW
- 9 GRANDSON
- 10 FATHER-IN-LAW
- 11 GRANDFATHER
- 12 BOARDER OR ROOMER
- 13 OTHER RELATIVE
- 14 OTHER NON-RELATIVE

SHOWCARD 14

- 1 SELF
- 2 MOTHER (INCLUDES STEP, FOSTER, ADOPTIVE)
- 3 DAUGHTER (INCLUDES STEP, FOSTER, ADOPTIVE)
- 4 SISTER (INCLUDES HALF, STEP, FOSTER, ADOPTIVE)
- 5 WIFE
- 6 UNMARRIED PARTNER
- 7 HOUSEMATE OR ROOMMATE
- 8 DAUGHTER-IN-LAW
- 9 GRANDDAUGHTER
- 10 MOTHER-IN-LAW
- 11 GRANDMOTHER
- 12 BOARDER OR ROOMER
- 13 OTHER RELATIVE
- 14 OTHER NON-RELATIVE

SHOWCARD 15

- 1 PERSON IN FAMILY WITH HEALTH INSURANCE LOST JOB OR CHANGED EMPLOYERS
- 2 LOST MEDICAID OR MEDICAL ASSISTANCE COVERAGE BECAUSE OF NEW JOB OR INCREASE IN INCOME
- 3 LOST MEDICAID OR MEDICAL ASSISTANCE COVERAGE FOR SOME OTHER REASON
- 4 COST IS TOO HIGH / CAN'T AFFORD PREMIUMS
- 5 BECAME INELIGIBLE BECAUSE OF AGE OR LEAVING SCHOOL
- 6 EMPLOYER DOES NOT OFFER COVERAGE, OR NOT ELIGIBLE FOR COVERAGE
- 7 GOT DIVORCED OR SEPARATED FROM PERSON WITH INSURANCE
- 8 DEATH OF SPOUSE OR PARENT
- 9 INSURANCE COMPANY REFUSED COVERAGE
- 10 DON'T NEED IT
- 11 RECEIVED MEDICAID OR MEDICAL INSURANCE ONLY WHILE PREGNANT

SHOWCARD 16

- 1 COST IS TOO HIGH / CAN'T AFFORD PREMIUMS
- 2 EMPLOYER DOES NOT OFFER COVERAGE, OR
NOT ELIGIBLE FOR COVERAGE
- 3 INSURANCE COMPANY REFUSED COVERAGE
- 4 DON'T NEED IT

SHOWCARD 16a

- 1 VETERAN'S ADMINISTRATION PAYMENTS
- 2 OTHER DISABILITY, RETIREMENT OR SURVIVOR
PENSION
- 3 UNEMPLOYMENT OR WORKER'S COMPENSATION
- 4 INTEREST INCOME
- 5 DIVIDENDS FROM STOCKS OR MUTUAL FUNDS
- 6 INCOME FROM RENTAL PROPERTIES, ROYALTIES,
ESTATES OR TRUSTS
- 7 ALIMONY
- 8 CHILD SUPPORT

SHOWCARD 17

- 1 LESS THAN \$1,000 (INCLUDING LOSS)
- 2 \$1,000 - \$1,999
- 3 \$2,000 - \$2,999
- 4 \$3,000 - \$3,999
- 5 \$4,000 - \$4,999
- 6 \$5,000 - \$5,999
- 7 \$6,000 - \$6,999
- 8 \$7,000 - \$7,999
- 9 \$8,000 - \$8,999
- 10 \$9,000 - \$9,999
- 11 \$10,000 - \$10,999
- 12 \$11,000 - \$11,999
- 13 \$12,000 - \$12,999
- 14 \$13,000 - \$13,999
- 15 \$14,000 - \$14,999
- 16 \$15,000 - \$15,999
- 17 \$16,000 - \$16,999
- 18 \$17,000 - \$17,999
- 19 \$18,000 - \$18,999
- 20 \$19,000 - \$19,999

SHOWCARD 18

- 21 \$20,000 - \$24,999
- 22 \$25,000 - \$29,999
- 23 \$30,000 - \$34,999
- 24 \$35,000 - \$39,999
- 25 \$40,000 - \$44,999
- 26 \$45,000 - \$49,999
- 27 \$50,000 - \$74,999
- 28 \$75,000 - \$99,999
- 29 \$100,000 OR MORE

PILL CARD A

The following prescription pain relievers are listed with their photographs if available on Pill Card A (Pain Relievers):

- 1 DARVOCET-N[®], DARVON[®], OR TYLENOL[®] WITH CODEINE
- 2 PERCOCET[®], PERCODAN[®], OR TYLOX[®]
- 3 VICODIN[®], LORTAB[®], OR LORCET[®]/LORCET PLUS[®]
- 4 CODEINE
- 5 DEMEROL[®]
- 6 DILAUDID[®]
- 7 FIORICET[®]
- 8 FIORINAL[®]
- 9 HYDROCODONE
- 10 METHADONE
- 11 MORPHINE
- 12 OXYCONTIN[®]
- 13 PHENAPHEN[®] WITH CODEINE
- 14 PROPOXYPHENE
- 15 SK-65[®]
- 16 STADOL[®] (NO PICTURE)
- 17 TALACEN[®]
- 18 TALWIN[®]
- 19 TALWIN[®] NX
- 20 TRAMADOL
- 21 ULTRAM[®]

CARD A

Pain Relievers

1

Darvocet-N®

Darvon®

Tylenol® with Codeine

2

Percocet®

Percodan®

Tylox®

3

Vicodin®

Lortab®

Lorcet®/Lorcet Plus®

4

Codeine

10

Methadone

14

Propoxyphene

5

Demerol®

11

Morphine

15

SK-65®

6

Dilaudid®

12

OxyContin®

16

Stadol®

7

Fioricet®

17

Talacen®

8

Fiorinal®

18

Talwin®

9

Hydrocodone

13

Phenaphen® with Codeine

19

Talwin® NX

20

Tramadol

21

Ultram®

PILL CARD B


The following prescription tranquilizers are listed with their photographs if available on Pill Card B (Tranquilizers):

- 1 KLONOPIN[®] OR CLONAZEPAM
- 2 XANAX[®], ALPRAZOLAM, ATIVAN[®], OR LORAZEPAM
- 3 VALIUM[®] OR DIAZEPAM
- 4 ATARAX[®]
- 5 BUSPAR[®]
- 6 EQUANIL[®]
- 7 FLEXERIL[®]
- 8 LIBRIUM[®]
- 9 LIMBITROL[®]
- 10 MEPROBAMATE
- 11 MILTOWN[®]
- 12 ROHYPNOL[®]
- 13 SERAX[®]
- 14 SOMA[®]
- 15 TRANXENE[®]
- 16 VISTARIL[®]

CARD B

Tranquilizers

1



Klonopin®

Clonazepam

2




Xanax®

Alprazolam

Ativan®

Lorazepam

3



Valium®

Diazepam

4



Atarax®

8



Librium®

13



Serax®

5



BuSpar®

9




Limbital®

14



Soma®

6



Equanil®

10



Meproamate

15



Tranxene®

7



Flexeril®

12



Rohypnol®

16



Vistaril®

PILL CARD C

The following prescription stimulants are listed with their photographs if available on Pill Card C (Stimulants):


- 1 METHAMPHETAMINE ("SPEED" OR "ICE" OR "CRANK") (NO PICTURE), DESOXYN[®], OR METHEDRINE[®] (NO PICTURE)
- 2 AMPHETAMINES (NO PICTURE), BENZEDRINE[®], BIPHETAMINE[®], FASTIN[®], OR PHENTERMINE
- 3 RITALIN[®] OR METHYLPHENIDATE
- 4 CYLERT[®]
- 5 DEXEDRINE[®]
- 6 DEXTROAMPHETAMINE
- 7 DIDREX[®]
- 8 ESKATROL[®]
- 9 IONAMIN[®]
- 10 MAZANOR[®]
- 11 OBEDRIN-LA[®] (NO PICTURE)
- 12 PLEGINE[®]
- 13 PRELUDIN[®]
- 14 SANOREX[®]
- 15 TENUATE[®]

CARD C

Stimulants

1

(picture not available)
Methamphetamine
("speed" or "ice" or
"crank")




Desoxyn®


(picture not available)
Methedrine

2


Amphetamines




Benzedrine®




Biphetamine®



Fastin®



Phentermine



3



Ritalin®



Methylphenidate




4



Cylert®

7



Didrex®

12



Plegine®

5



Dexedrine®

8



Eskatrol®

13



Preludin®

6



Dextroamphetamine

9



Ionamin®

14



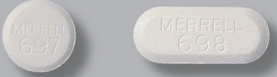
Sanorex®

10



Mazanor®

15



Tenuate®

PILL CARD D

The following prescription sedatives are listed with their photographs if available on Pill Card D (Sedatives):

- 1 METHAQUALONE (INCLUDES SOPOR[®],
QUAALUDE[®]) (NO PICTURE)
- 2 NEMBUTAL[®] SODIUM, PENTOBARBITAL (NO
PICTURE), SECONAL[®], SECOBARBITAL (NO
PICTURE), OR BUTALBITAL (NO PICTURE)
- 3 RESTORIL[®] OR TEMAZEPAM
- 4 AMYTAL[®]
- 5 BUTISOL[®]
- 6 CHLORAL HYDRATE (NO PICTURE)
- 7 DALMANE[®]
- 8 HALCION[®]
- 9 PHENOBARBITAL
- 10 PLACIDYL[®]
- 11 TUINAL[®]

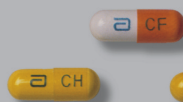
CARD D

Sedatives

1

(picture not available)
Methaqualone
(includes Sopor®,
Quaalude®)

2



Nembutal® Sodium

(picture not available)
Pentobarbital



Seconal®

(picture not available)
Secobarbital

(picture not available)
Butalbital

3



Restoril®



Temazepam

4



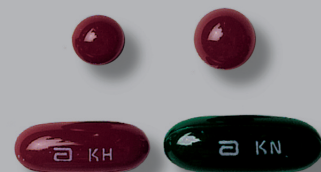
Amytal®

7



Dalmane®

10



Placidyl®

5



Butisol®

8



Halcion®

6

Chloral Hydrate

9



Phenobarbital

11



Tuinal®

2010 National Survey on Drug Use and Health

Summary of the Questionnaire

You have asked to know more about the *National Survey on Drug Use and Health* and the types of questions the interviewer will ask. Below is a summary of each section of the questionnaire for you to examine. Keep in mind that not everyone will see every question—the questions depend on the participant's own experiences. Furthermore, participants can always refuse to answer any questions during the interview.

Demographics

This section, administered by the interviewer, consists of questions about the participant such as his/her date of birth, race, educational background, and health status.

Sample Questions:

- ▶ What is the highest grade or year of school you have **completed**?
- ▶ Would you say your health in general is excellent, very good, good, fair, or poor?

Computer Practice Session

In this section, the interviewer shows the participant how to use the laptop computer and lets him/her practice using a short practice session.

Cigarettes, Alcohol and Illicit Drugs

For most of the rest of the interview, the participant answers questions by listening to the questions over the headphones and/or reading the questions on the computer screen, and then entering responses using the computer's keyboard. The participant answers these questions in private, although the interviewer is available to help with any problems using the computer. During this part of the interview, only the participant can hear and see the questions and see his/her responses.

Tobacco Products and Alcohol

These sections include questions about whether and how often participants have used cigarettes, chewing tobacco, snuff, cigars, pipe tobacco, and alcoholic beverages such as beer, wine, or liquor.

Sample Questions:

- ▶ Have you **ever** smoked part or all of a cigarette?
- ▶ How old were you the **first time** you used chewing tobacco?
- ▶ What is your **best estimate** of the number of days you drank alcohol during the past 30 days?

Illicit Drugs

The next sections ask about the participant's use or non-use of marijuana, heroin, cocaine, hallucinogens, and inhalants; and prescription pain killers, tranquilizers, stimulants, and sedatives when taken only for their effect. Questions about drug dependence and drug treatment are also included in these sections.

Sample Questions:

- ▶ Have you **ever**, even once, used marijuana or hashish?
- ▶ How much do people risk harming themselves physically and in other ways when they use **cocaine once a month**?

Adult Social Environment and Mental Health

Participants aged 18 and older receive questions about their social experiences such as: how many times they have moved, their opinions about drug use, and in some cases, their experiences as a parent. Mental health questions cover such topics as depression and treatment for mental health problems.

Sample Questions:

- ▶ How do you feel about **adults** trying marijuana or hashish once or twice?
- ▶ During the past 12 months, was there any time when you **needed** mental health treatment or counseling for yourself but **didn't get it**?
- ▶ Have you ever in your life had a period of time lasting several days or longer when **most of the day** you felt **sad, empty, or depressed**?

Youth Experiences and Mental Health

Youth aged 12-17 participating in the survey are also asked questions about their social experiences such as: perceptions about the risks of using certain drugs; whether getting drugs is difficult or easy; feelings about school and peers; and involvement in clubs, sports, and other extracurricular activities. The mental health questions cover such topics as depression and treatment for mental health problems.

Sample Questions:

- ▶ **During the past 12 months**, in how many different kinds of school-based activities, such as team sports, cheerleading, choir, band, student government, or clubs, have you participated?
- ▶ Have you ever in your life had a period of time lasting several days or longer when **most of the day** you felt **sad, empty, or depressed**?
- ▶ During the past 12 months, did you receive treatment or counseling from a **private therapist, psychologist, psychiatrist, social worker, or counselor** for emotional or behavioral problems that were **not** caused by alcohol or drugs?

Health Care and Demographic Information

In this section, the laptop is handed back to the interviewer, who asks questions about education, health insurance, and family income information to help in analyzing the data. If necessary, a knowledgeable adult in the household may be asked to help participants answer some of these questions.

The answers to these questions increase the government's knowledge about health care, especially as it may relate to drug use or treatment. This information helps in planning health care services and finding ways to lower the costs of care.

Sample Questions:

- ▶ How many hours did you work **last week** at all jobs or businesses?
- ▶ **Before taxes and other deductions**, was the total **combined family** income during 2009 more or less than 20,000 dollars?
- ▶ Are you currently covered by private health insurance?

Please feel free to ask the interviewer if you have any other questions about the questionnaire.

Thank you for your cooperation and help!